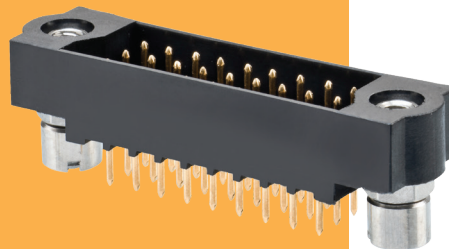


Datamate J-Tek 3-Row Connectors - Male

Male Vertical PC Tail

- Board Mount nuts to be tightened to a maximum torque of 23cmN.
- Fully shrouded contacts.
- Polarised mouldings.
- All contacts are gold finish for full RoHS compliance.
- Mates with all Datamate 3-Row female connectors with compatible jackscrews.

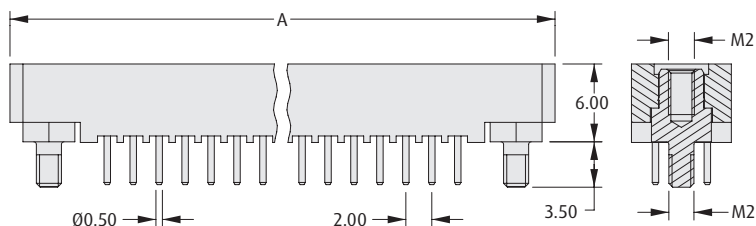
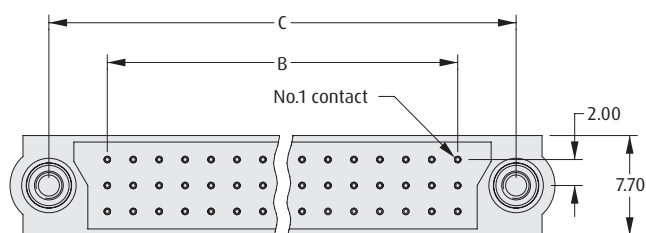


DATAMATE J-TEK 3-ROW

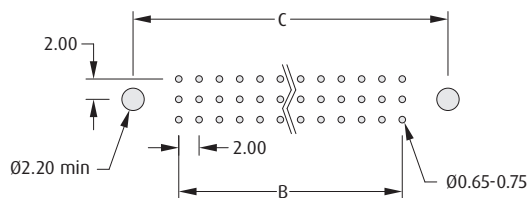
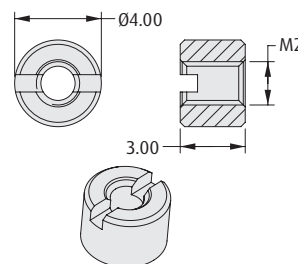
MALE VERTICAL

CALCULATION

A	B + 15
B	(Total no. of contacts - 3) x 2/3
C	B + 9



Board Mount Nut, 2 per connector



Recommended PC Board Pattern

HOW TO ORDER

M83 - LM T1 M2 N XX - 0000 - 000

SERIES CODE

TOTAL NO. OF CONTACTS

18, 27, 36, 54, 60, 96

TYPE

T1 3mm Tail

JACKSCREW

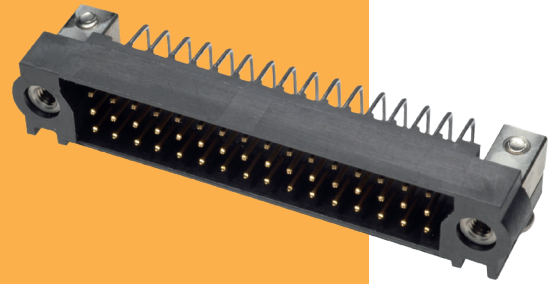
M2 Board Mount Jackscrew

All dimensions in mm.

Datamate J-Tek 3-Row Connectors

Male Horizontal PC Tail

- Board Mount screws to be tightened to a maximum torque of 23cmN.
- Suitable for motherboard/daughterboard configurations.
- Fully shrouded contacts, polarised mouldings.
- All contacts are gold finish for full RoHS compliance.
- Mates with all Datamate 3-Row female connectors with compatible jackscrews.

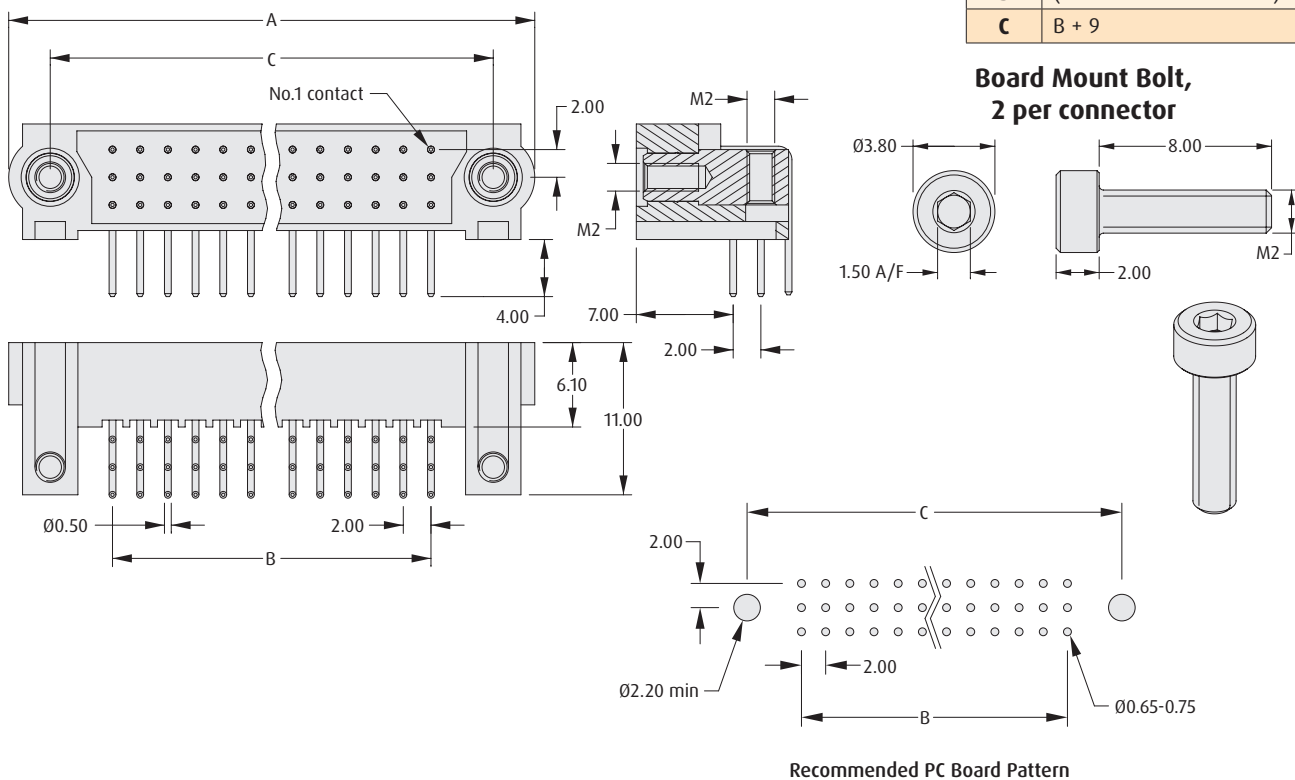


DATAMATE J-TEK 3-ROW

MALE HORIZONTAL

CALCULATION

A	B + 15
B	(Total no. of contacts - 3) x 2/3
C	B + 9



HOW TO ORDER

M83 - LM L3 M7 N XX - 0000 - 000

SERIES CODE

TYPE

L3 4mm Tail

TOTAL NO. OF CONTACTS

18, 27, 36, 54, 60, 96

JACKSCREW

M7 Hex Socket Board Mount

All dimensions in mm.